

 HOTEL

# Park Hyatt Aviara, California

 California, United States

 ADD TO MY BOARDS

INTERIOR DESIGNERS:

WATG

MANUFACTURERS:

Sans Souci



SHARE



## ABOUT THE PROJECT

California-based design firm [WATG](#) and its interior design studio, Wimberly Interiors, collaborated seamlessly to deliver a transformative design to this iconic Forbes Five-Star, AAA Five Diamond resort. The design touched all elements of the resort and incorporated the firm's architecture, landscape architecture and Wimberly Interiors' design teams.

The lobby arrival experience has been revolutionized to seamlessly connect the outdoors with the indoors – bringing the ocean view directly into the lobby, creating a Mediterranean "outdoor living room" and developing a new grand staircase that descends into dazzling outdoor event space. A series of lounges and bars within the lobby space are each designed with the unique casual elegance reflective of a coastal California oasis. WATG and Wimberly Interiors collaborated with Top Golf to concept and create two new Top Golf Suites, situated just off the lobby space, and ideal for ultra-private small events with effortless access to the lobby and event lawn spaces.

Inspired by the grand estates of Santa Barbara, Montecito and Rancho Santa Fe, the outdoor event and leisure spaces have been designed to cater beautifully to families, couples and Southern California's most elegant soirees and events. As guests exit the lobby onto the outdoor veranda, a new grand stair offers a picturesque overlook onto the courtyard event space. The new event lawn features date palms, bird of paradise and a variety of aloes and agaves. Some modern elements adorn the courtyard as well, including two new fountains designed as a contemporary nod to classical Mediterranean architecture, and a steel sculpture by local artist, Jennifer Gilbert Asher from Eaton Fine Art, which symbolizes the fluid movement of local birds through an abstract lens.

A new lobby lounge makes the ideal first impression for guests, with a resort-like feel and open-air corridors leading to an outdoor veranda. The new oval-shaped bar was designed to activate the lobby, equipped with power USB outlets for people to recharge or work remotely. On the opposite side of the bar, the lobby lounge, otherwise known as Park Hyatt's "living room", features flexible seating for couples, families and business travelers alike for continental dining. A communal table sits in front of built-in millwork cabinetry, which can also be rented out as another bar for events or receptions.

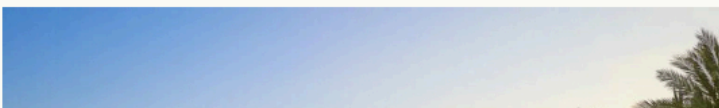
The pool bar is perfect for lunch or happy hour, where guests can unwind outside, take in the ocean breeze and beautiful surrounding views. The color schemes mix dark tones with crisp whites, as well as detailed banding in grays in blues that is seen throughout the property.

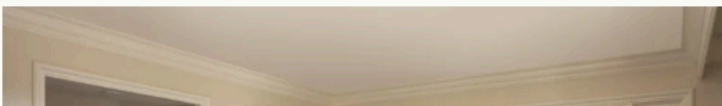
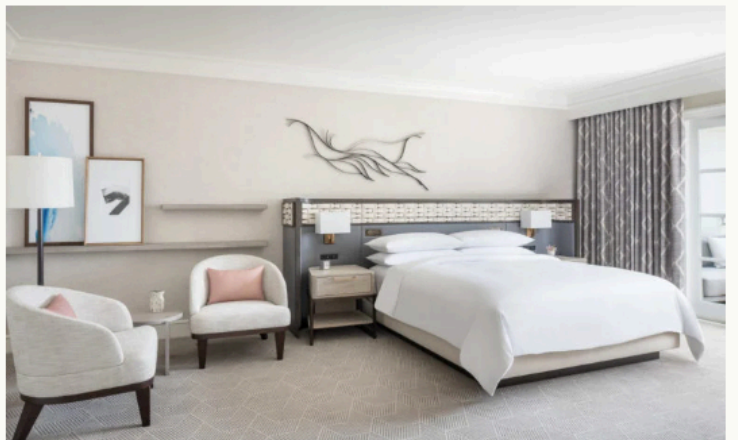
For an all-day dining option, guests can visit Ponto Lago, a new restaurant that immerses guests into an intimate setting featuring local California cuisine. An elegant entry bar greets diners as they enter the space, serving specialty cocktails with local mezcal and tequila. To open up the space, a show kitchen with a stunning quartzite countertop puts food at center stage, with the option for impromptu tastings for guests. Surrounding walls are glazed with light gray tile to play off the stone counter, while Chevron-patterned oak flooring and whimsical leaflike lighting add a touch of warmth. Large windows unveil ocean views to give a constant connection to the California sun, which can also be enjoyed on the restaurant's patio, adorned with outdoor heaters and select herb plants.

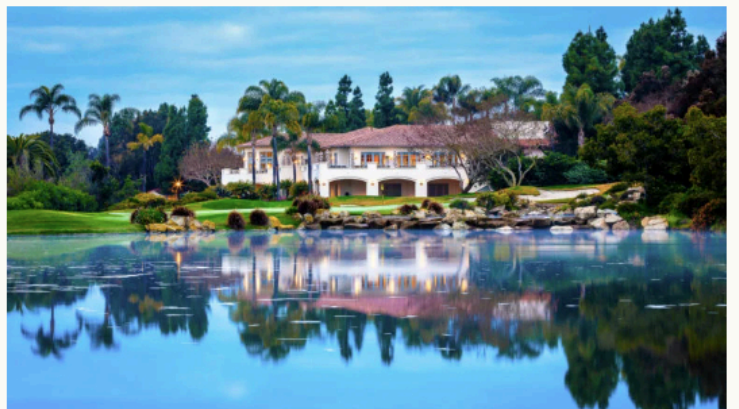
Guestrooms were designed as a sanctuary inspired by the beauty and symbolism of the Great Blue Heron. Residing in the Batiquitos Lagoon, this majestic bird is celebrated by Native American tradition as progressive, self-reliant, tranquil and graceful. The guest sanctuary was designed as a home away from home in a unique California casual elegant style that features a mix of hard and soft materials that celebrate the subtle blue-grey plumage color of the Great Blue Heron.

Wimberly Interiors collaborated with Terry Eaton of Eaton Fine Art in Austin, Texas to create modern, abstract bronze wall art for each guestroom which depicts the stately Great Blue Heron soaring in flight. The guest rooms were dramatically modernized to be smart, intuitive and functionally seamless within the elegant design. Unique spatial elements such as wood ledges, living room setting at the window wall and the curated library wall that also serves as a desk and bar maximize the space and deliver a distinctly residential experience for guests. Throughout the rooms, the materials and finishes are refined, elevated and casually-elegant – creating an authentic escape from everyday life.

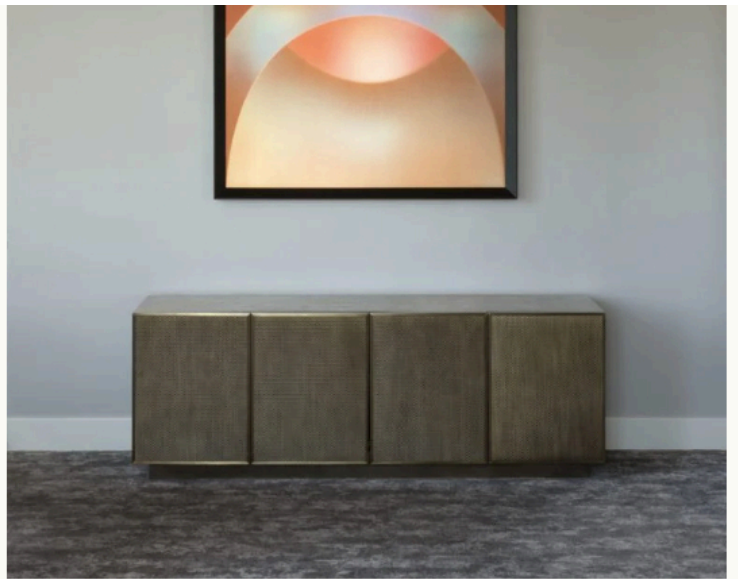
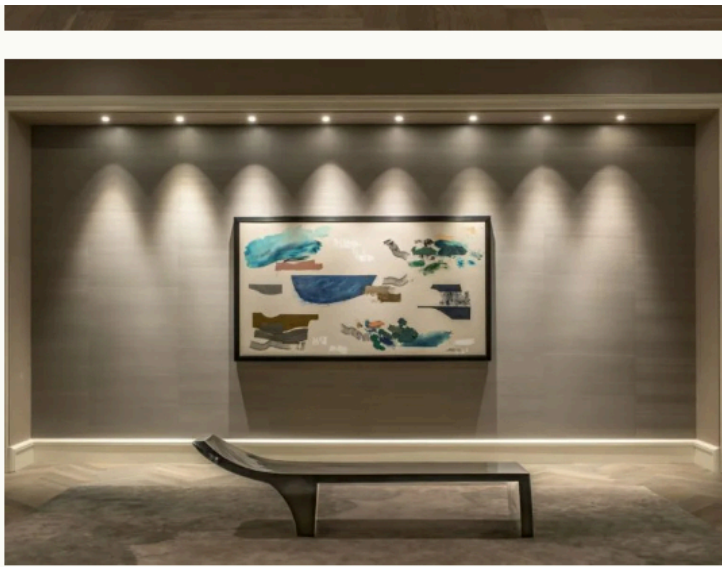
The inspiration for the meeting space takes cues from the eucalyptus trees, native black sage, salt marshes and 185 species of migrating birds that make up the beautiful coastal wetland surrounding the resort. Thoughtful details, materials, textures and artifacts are layered throughout as the guests embark on a journey through this space.











## PRODUCTS FEATURED



PENDANT LAMPS

### CONTOUR

Sans Souci

Featured on 08 April, 2022

## SHARE:



.STUDIO ACTIVITIES OPPORTUNITIES PROJECTS ADDRESS BOOK RESOURCES

← 175 - HOPSOTCH ACADEMY

### i987 - FF&E Package

OVERVIEW SCHEDULE INSTRUCTIONS

